

Jingle Bells

Finished size 30" x 22"



Fabric Requirements

- 3/4 yd tan print for Center block, bell slots and 4-patch blocks
- 1/2 yd red print for bells, holly, 4-patch blocks and border
- 1/2 green for holly, 4-patch blocks, letters and binding

Center Block

Cut tan fabric 18 ½" x 20 ½"

Trace patterns on to fusible web and follow manufacturers directions for fusing to fabric. Follow picture for placement.
Applique using your favorite method. Remember to add a seam allowance for needleturn.

The lettering can either be embroidered on or can be cut and fused using the templates I've included.

4-Patch Blocks

You will need 6 red and 6 green blocks.

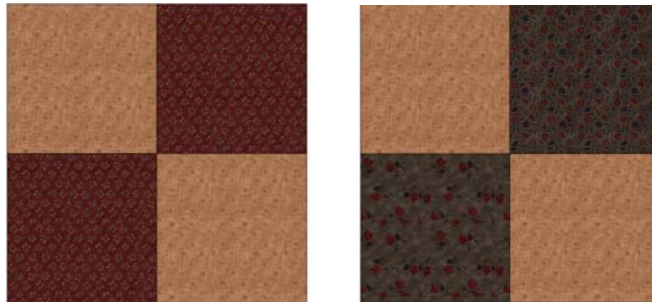
Cut strips 2"

Sew together 1 green strip and 1 tan strip

Sew together 1 red strip and 1 tan strip

Cutting across the strip, cut 2" rectangles

Sew rectangles together using ¼" seam



Sew 6 blocks together alternating red and green

Sew 4-patch strip to the top.

Repeat for the bottom.

Border

Cut red border strips 2" wide.

Top and bottom should measure 22"

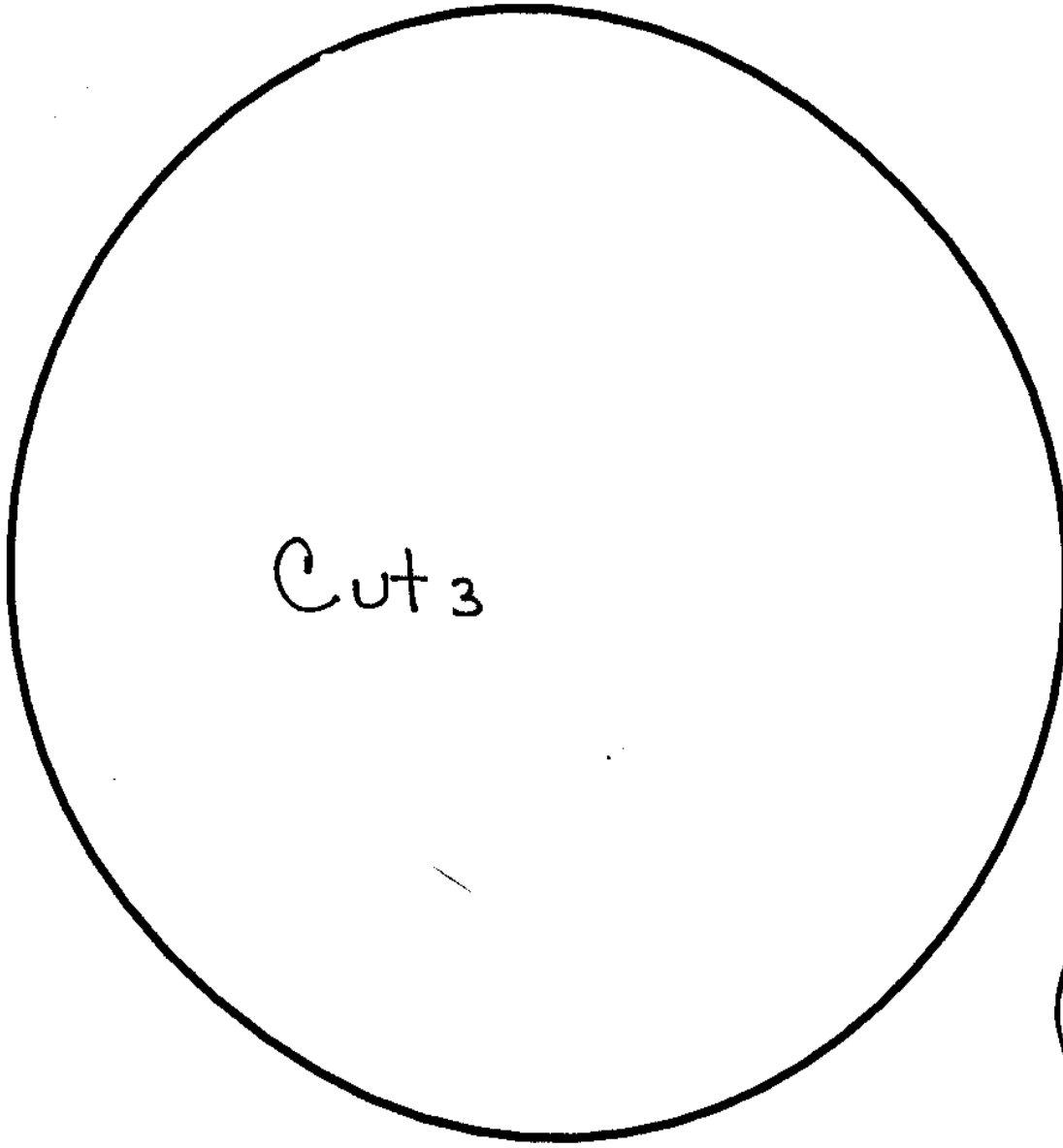
Sides should measure 30"

If not, adjust your length.

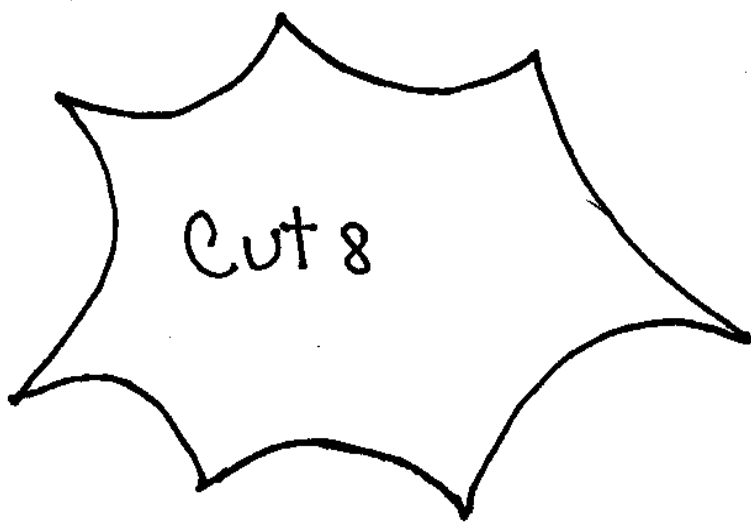
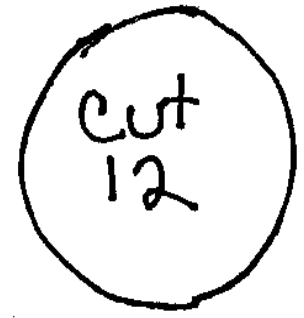
Sew to the top, bottom and sides.

Bind and quilt.

hghh



- cut
6



B
o
ll
s

T
i
e
l
e